

Weekly programming series LCD digital heating thermostat is weekly circulation, this heating room thermostat can let you set 6 periods with different setted temperature, also you can select manual mode or periods programming control mode. It is used for controlling electrical heating equipments and electric control valve in water-based heating system.

Model No.:

Mode No.	Current	Control Method
E91.713	3A	room and floor sensor, temperature control and limitation, weekly programming
E91.723	3A	room and floor sensor, temperature control and limitation, weekly programming, potential free output
E91.716	16A	room and floor sensor, temperature control and limitation, weekly programming

Technical Data

- > voltage: see products
- > power consumption: 2W
- > setting range: 5...90°C (upper limitation from 35°C-90°C adjustable)
- > limitation range: 5...60°C (factory setting 35°C)
- > switching differential: 0.5-10°C adjustable, factory setting ± 1°C
- > ambient temperature: -5~50°C
- > protective housing: IP20
- > housing material: anti-flammable PC

User's Daily Operation

- 1) on/off "☺", switch on or switch off
- 2) press the "▲" or "▼" key to enter into temporary control under programming control mode
- 3) press the "▲" or "▼" key to adjust temperature setted value
- 4) press both the "☺" key for 5 seconds to adjust current time, press the "☺" key to select required object, press the "▲▼" key to adjust day and time, then switch off thermostat for confirmation
- 5) press the "☺" key to select manual mode or programming control mode
- 6) setted temperature and clock are displayed alternatively, measuring temperature is read directly
- 7) lock and unlock, press both "▲" and "▼" for 5 seconds display "🔒" means lock ("🔒" disappear means unlock)

Function and Display Explanation

- manual control mode
- periods programming control mode
- heating on
- wake up, period 1
- leave (am), period 2
- return (am), period 3
- leave (pm), period 4
- return (pm), period 5
- sleep period 6

Periods Programming
press the menu key for 5 seconds to begin programming

Item	Period	period symbol	default time	adjust	default temperature	adjust
	working day	1		06: 00	adjust period time	20°C
		2		08: 00		15°C
		3		11: 30		15°C
		4		12: 30		15°C
		5		17: 00		22°C
		6		22: 00		15°C
	holiday	1		08: 00	22°C	
		2		23: 00	15°C	

Advanced Setting

technical parameters are operated by professional engineers and technicians press the ☺ key simultaneously switching on the thermostat to enter into the advanced setting mode (when the thermostat is switched off)



1ADJ measured temperature display and adjustment
press the ▲ key or ▼ key to adjust current measured temperature value adjustable range: ± 9.9°C then press the menu key to enter into next advanced setting



2SEN sensor selection
press the ▲ key or ▼ key to select sensor working mode IN is internal sensor, OUT is external sensor, ALL is both sensors, external sensor is limit sensor then press the menu key to enter into next advanced setting



3LIT adjust limitation temperature value
press the ▲ key or ▼ key to adjust limitation temperature value limitation range 5~60°C then press the menu key to enter into next advanced setting



4DIF switching differential (band) setting
press the ▲ key or ▼ key to adjust switching differential setting range 0.5~10°C then press the menu key to enter into next advanced setting



5LTP anti-freezing function on/off under switch off mode
press the ▲ key or ▼ key to change anti-freezing function status then press the menu key to enter into next advanced setting



6PRG holiday selection and close weekly programming
press the ▲ key or ▼ key to selection holiday status 2 days, 1 day, 0 day and closing mode then press the menu key to enter into next advanced setting



7RLE potential-free output and main output synchronous/asynchronous direction
press the ▲ key or ▼ key to change current output status 00 is synchronous, 01 is asynchronous then press the menu key to enter into next advanced setting



8DLY potential free time-lapse output time
press the ▲ key or ▼ key to change output time range from 0 to 5 minutes then press the menu key to enter into next advanced setting



9HIT maximum temperature setting value
press the ▲ key or ▼ key to adjust maximum temperature setting value from 35 to 90 then press the menu key to enter into next advanced setting

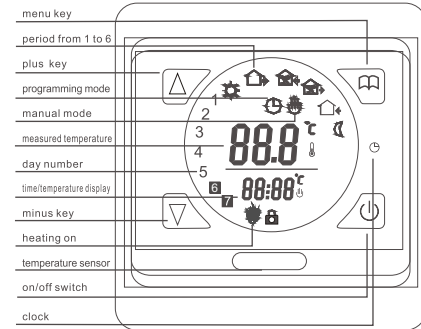


AFAC reset to factory setting
press the ▲ key for 5 seconds till --- displayed to recovery to factory setting then press the menu key to enter into the 1st advanced setting item press the switch off key to exit and save the advanced setting

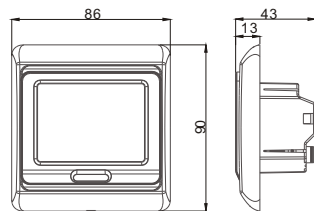
Sensor Error Indicator

please select the right working mode of internal, external sensor, LCD will display Er0 or Er1 if you select a wrong mode or sensor is failure(damaged). Er0 means there is no internal sensor or internal sensor is failure, Er1 means there is no external sensor or external sensor is failure. thermostat must be checked till the fault is eliminated

Function and display explanation

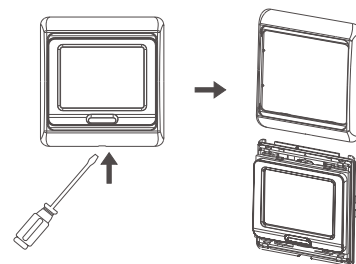


Dimension:
unit: mm

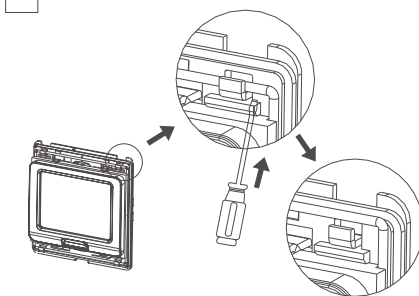


Mounting Step

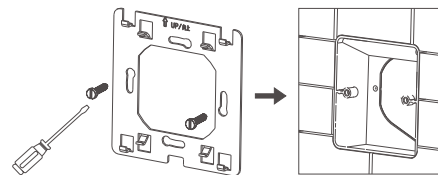
1 disassemble external frame with screw driver



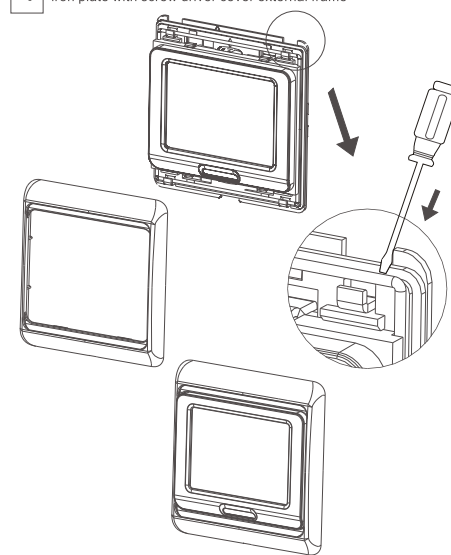
2 disassemble iron plate with screw driver



3 fix iron plate to installation box with screw driver



4 wiring cables according to wiring diagram, install thermostat, fix iron plate with screw driver cover external frame



System Wiring Diagram

